

CW-90XB

Light-Capacity Bench Scales

Standard Features

- 304 stainless steel construction
- 5 point overload protection
- Specially designed adjustable support feet provide exceptional traction and will not scratch surfaces
- IP69K, stainless steel hermetically sealed load cell

Specifications

Load Cell, NTEP Certified:

Stainless steel and hermetically sealed, IP69K

Output Impedance:

350 Ω

Maximum Overload:

180 to 200% depending on capacity

Overload Protection:

5 point, independently adjusted

Cable Length:

34 in or 10 ft

Compensated Temperature Range:

14° F to 104° F (-10° C to 40° C)

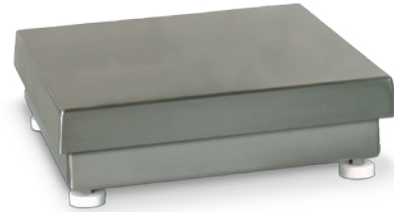
Warranty:

Three years including water ingress

Approvals:

NTEP CC 95-072, Class III 5,000 d

Measurement Canada AM-5082, Class III 5,000 d



APPROVALS



Measurement
Canada
Approved



Meets USDA
Requirements

Part Number/Price

PART #		PLATFORM CAPACITY	DIMENSIONS	EST. SHIP WEIGHT	PRICE
10 ft cable	34 in cable				
112600	106143	5 lb (2.5 kg)	10 x 10 x 4.25 in	14 lb	Consult
112602	106144	10 lb (5 kg)	10 x 10 x 4.25 in	14 lb	Consult
112604	106145	25 lb (12.5 kg)	10 x 10 x 4.25 in	14 lb	Consult
112606	106146	25 lb (12.5 kg)	12 x 12 x 4.25 in	17 lb	Consult
112608	106147	50 lb (25 kg)	12 x 12 x 4.25 in	17 lb	Consult
112610	106148	100 lb (50 kg)	12 x 12 x 4.25 in	17 lb	Consult

Options/Accessories

PART #	DESCRIPTION	PRICE
112044	12 in column for IQ plus® 210, 320IS (without battery option), 320IS plus (without battery option), IQ plus® 390-DC, IQ plus® 590-DC, 420 plus®, CW-90, CW-90X and 480 Legend	Consult
112045**	18 in column for IQ plus® 210, 320IS (without battery option), 320IS plus (without battery option), IQ plus® 390-DC, IQ plus® 590-DC, 420 plus®, CW-90, CW-90X and 480 Legend	Consult

** Not recommended for use with scale bases smaller than 12 x 12 in

DRAWING DIMENSIONS

10 in x 10 in			
A	4.25 in (107.95 mm)	C	10.37 in (263.40 mm)
B	10.37 in (263.40 mm)		
12 in x 12 in			
A	4.25 in (107.95 mm)	C	12.37 in (314.20 mm)
B	12.37 in (314.20 mm)		

